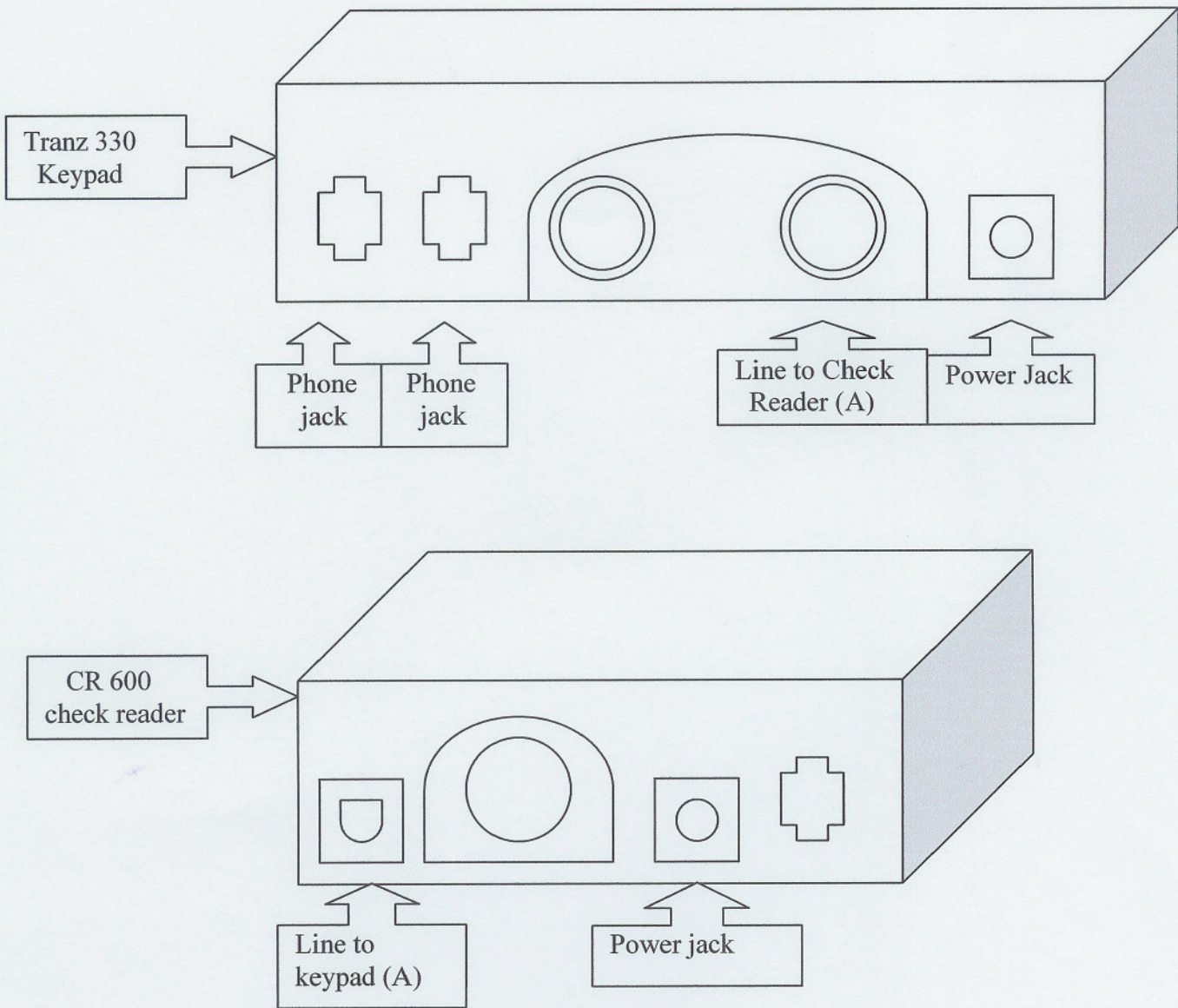


Set up Instructions-CR600



1. Connect Power Pack plug to CR600 and Tranz 330. Plug them into grounded outlet.
 2. Connect CR600 and Tranz 330 together (A) with provided cord, making sure that they are lined up properly. Check for flat side of plug on CR600 and indentation on plug going to Tranz 330. **THEY MUST BE INSERTED PROPERLY TO WORK CORRECTLY!**
 3. Plug phone cord (Provided) into EITHER of the 2 phone jacks on Tranz 330. If a dedicated line is not available, you may have to splice into one of your phone lines with a splitter (Not Provided). There is NO phone line connected to the check reader.
- If you have any questions, PLEASE feel free to call @ 1-866-244-5933. Thank You!